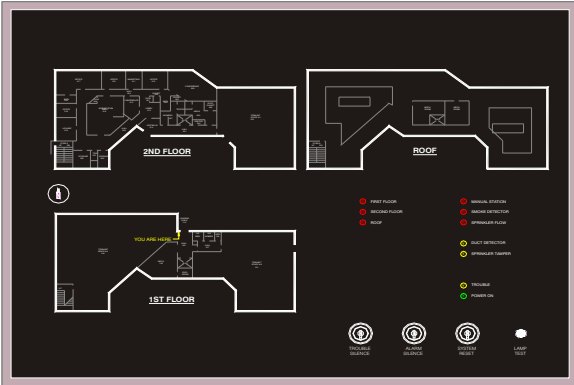


# QED-3624

## Horizontal Mounting



Quality Engraving & Design, Inc. (QED) manufactures its annunciators in both directory and graphic styles. They can be mounted either flush or surface.

There are two types of enclosures available. The first one is a continuous hinge design that allows for convenient removal and re-assembly of the front panel. The second one is a traditional picture frame design in architectural gray aluminum without a hinge.

There is a key lock or hidden screw construction to provide tamper resistance.

### Annunciator models include:

- > Smoked Plexiglas – White screened graphics, backlit, protected by a layer of non-glare Plexiglas
- > Micarta--Black, Red or White
- > Various Metals-- Stainless Steel, Aluminum, Brass or Bronze

LISTING:	UL / California State Fire Marshal Listed	
INITIATING POLARITY:	Positive/Negative	
OPERATING VOLTAGE	6, 12, 24VDC	
INDICATORS:	High efficiency LED's. Red, Yellow & Green.	
STANDARD DIMENSIONS:	Height	24-1/4"
	Width	36-1/4"
OPTIONAL FEATURES:	Trouble Sonalert	Trouble Indicator
	Trouble Switch	Reset Switch
	Ac Power Indicator	Led Matrixing