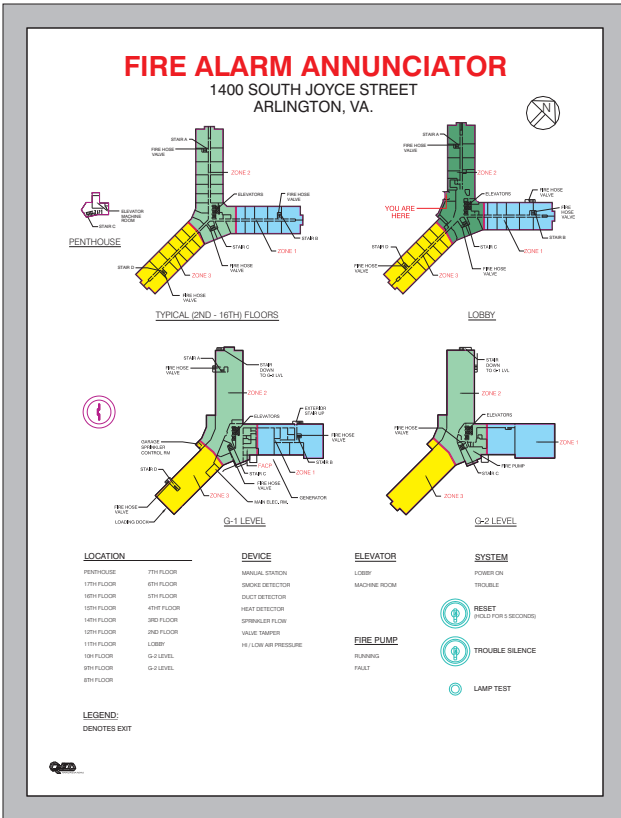


QED-1000C



Quality Engraving & Design, Inc. (QED) manufactures its annunciators in both directory and graphic styles. They can be mounted either flush or surface

There are two types of enclosures available. The first one is a continuous hinge design that allows for convenient removal and re-assembly of the front panel. The second one is a traditional picture frame design in architectural gray aluminum without a hinge.

There is a key lock or hidden screw construction to provide tamper resistance.

standard features:

Full color image is printed with UV rated inks onto matte film. This film is sandwiched between a 3/16" thick white sintra(PVC)backing panel and a 1/16" thick non-glare plexiglas cover. LED's mount through holes in a black aluminum and are wired to custom interface boards.

LISTING:	UL / California State Fire Marshal Listed	
INITIATING POLARITY:	Positive/Negative	
OPERATING VOLTAGE:	6, 12, 24VDC	
INDICATORS:	High efficiency LED's. Red, Yellow & Green.	
OPTIONAL FEATURES:	Trouble SonaAlert	Trouble Indicator
	Trouble Switch	Reset Switch
	Ac Power Indicator	Led Matrixing